

Registrar of Regulations	Date/Time filed with Registrar of Regulations
<i>AUTHORIZATION TO FILE DOCUMENTS INCORPORATED BY REFERENCE BY DESCRIPTION</i>	

① Agency: *Virginia Department of Transportation (Commonwealth Transportation Board)*

② Regulation Numbers: N/A 24 VAC 30-92
Title of Regulation: Secondary Street Acceptance Requirements

③ Effective Date of Regulation: December 2011

④ Name of Document Incorporated by Reference:
VDOT's Road & Bridge Standards, 2008, revised 2011

⑤ Attach a summary of the document incorporated by reference, including publication date and a copy of the cover page.
See attachments

<p>⑥ Document available for inspection at the following location: <u>Va. Dept. of Transportation</u> <u>Location & Design. Division</u> <u>1401 E. Broad St.</u> <u>Richmond, Va. 23219</u> <u>http://www.virginiadot.org/business/locdes/road-and-bridge-standards.asp</u></p>	<p>⑦ Copy of referenced document may be procured from: <u>Va. Dept. of Transportation</u> <u>Location & Design Engineer</u> <u>1401 E. Broad St.</u> <u>Richmond, Va. 23219</u> <u>http://www.virginiadot.org/business/locdes/road-and-bridge-standards.asp</u></p>
-----------------------------------------------------------------------------------------------------------------------------------------------------------------------------------------------------------------------------------------------------------------------------------------------------------------------------------------------------------------------------------------------------	-----------------------------------------------------------------------------------------------------------------------------------------------------------------------------------------------------------------------------------------------------------------------------------------------------------------------------------------------------------------------------------------

⑧ Exemptions Claimed (Specific Reference):
Administrative Process Act N/A -see 8/10/93 OAG letter
Virginia Register Act N/A -see 8/10/93 OAG letter
Virginia Code Commission Regulations § 3.3 (B)(1) - document exceeds 500 pages and is generally available to the public

Request submitted by: Jo Anne P. Maxwell
Agency Regulatory Coordinator 11/28/2011
Title Date

Approved: _____
Jane D. Chaffin, Registrar of Regulations Date



COMMONWEALTH of VIRGINIA

Stephen D. Rosenthal
Attorney General

Office of the Attorney General
Richmond 23219

Supreme Court Building
101 North Eighth Street
Richmond, Virginia 23219
804 - 786 - 2071

August 10, 1993

Mr. David L. Roberts
Management Services
Virginia Department of Transportation
1401 East Broad Street
Richmond, Virginia 23219

Dear Mr. Roberts:

Here is my analysis of the filing requirement with the Registrar. The exemptions noted, in some instances, might not survive a strong challenge, but are defensible. I recognize the Registrar may allow only a listing, in lieu of filing. That might work for Speed limits and Weight limits reductions.

With respect to the Department of Rail and Public Transportation, the Rail Corridor Preservation and Industrial Rail Access both need to be filed, but are exempt from APA public hearing process per § 9-6.14:4.1B(4). I imagine that the Transit side have some documents, too, but have not been called upon to review them.

Sincerely,

A handwritten signature in cursive script that reads "John J. Beall, Jr.".

John J. Beall, Jr.
Senior Assistant Attorney General

56/157

Attachment

Location and Design

1. Road Design Manual, Vols. 1 & 2
2. Location & Design Instructional & Information Memoranda
3. Drainage Manual
4. Post-construction Manual
5. Public Involvement Policy & Procedures Manual
6. Road and Bridge Standards, Vols. 1 & 2*
7. CADD Users' Manual
8. Survey Manual
9. Consultant's Guide for Fee Proposal
10. ~~Procedures Manual for Procurement of Professional Services~~

~~All documents except Chapters 2, 3, 4, 9, 10, and 11 of the~~
~~Procedures Manual for Procurement of Professional Services~~
~~(Document 10) are internal, instructional documents.~~ The noted
chapters, however, are close to having the "effect of law" and
should be filed with the Registrar. The chapters, however, are
exempt from APA per § 9-6.14:4.1B(2). See Chapters 2-4, 9-11.

SUMMARY OF DOCUMENT INCORPORATED BY REFERENCE

VDOT'S ROAD & BRIDGE STANDARDS

VDOT'S *Road & Bridge Standards*, Volumes I and II, contain technical civil engineering drawings, charts, and tables for use by road designers, contractors, and others involved in highway construction and maintenance operations. Although the cover page shows a publication date of 2008, both volumes are assessed for updates periodically, with individual plan sheets and errata memos issued as needed. Volume I contains drawings and data referring to topics such as drainage item details, curb, median, and entrance gutters, guardrail markers, and miscellaneous design tables. Volume II contains drawings and data referring to topics such as box culverts, bridge construction, landscaping, traffic control devices, and utilities. Tables of Contents and sample pages are attached for each volume. The total number of pages for both volumes is approximately 770 pages.

COMMONWEALTH OF VIRGINIA




2008

ROAD AND BRIDGE STANDARDS

VOLUME I

STANDARD	TITLE	PAGE
EW-1-1A	STANDARD ENDWALL FOR PIPE CULVERTS 12" - 36" CIRCULAR AND 23" X 14" - 53" X 34" ELLIPTICAL PIPES	101.01
EW-1PC, 1APC	PRECAST ENDWALL FOR PIPE CULVERTS 12" - 36" CIRCULAR AND 23" X 14" - 53" X 34" ELLIPTICAL PIPES	101.02
EW-2, 2A	STANDARD ENDWALL FOR PIPE CULVERTS 42" - 96" CIRCULAR AND 60" X 38" - 106" X 68" ELLIPTICAL PIPES	101.03
	STANDARD ENDWALL FOR PIPE CULVERTS 42" - 96" CIRCULAR	101.04
	STANDARD ENDWALL FOR PIPE CULVERTS 60" X 38" - 106" X 68" ELLIPTICAL PIPES	101.05
EW-2PC	PRECAST ENDWALL FOR 42" - 96" CIRCULAR PIPE CULVERTS	101.06
EW-2APC	PRECAST ENDWALL FOR 60" X 38" - 106" X 68" ELLIPTICAL PIPE CULVERTS	101.07
EW-2S	STANDARD ENDWALLS FOR 42" - 96" PIPE CULVERTS 30 AND 45 DEGREE SKEWS	101.08
	STANDARD ENDWALLS FOR 42" - 96" PIPE CULVERTS 30 AND 45 DEGREE SKEWS	101.09
	PRECAST ENDWALLS FOR PIPE CULVERTS 42" - 96" PIPE 30 AND 45 DEGREE SKEW	101.10
EW-6	ENDWALL FOR MULTIPLE PIPE CULVERTS 12" - 36" PIPES	101.11
EW-6PC	PRECAST ENDWALLS FOR MULTIPLE PIPE CULVERTS 12" - 36" PIPE	101.12
EW-6S	ENDWALLS FOR MULTIPLE PIPE CULVERTS 12" - 36" PIPE 30 DEGREE SKEW	101.13
	ENDWALLS FOR MULTIPLE PIPE CULVERTS 12" - 36" PIPE 45 DEGREE SKEW	101.14
	PRECAST ENDWALLS FOR MULTIPLE PIPE CULVERTS 12" - 36" PIPE 30 DEGREE SKEW	101.15
	PRECAST ENDWALLS FOR MULTIPLE PIPE CULVERTS 12" - 36" PIPE 45 DEGREE SKEW	101.16
EW-7	ENDWALLS FOR MULTIPLE PIPE CULVERTS 42" - 96" PIPE	101.17
EW-7PC	PRECAST ENDWALLS FOR MULTIPLE PIPE CULVERTS 42" - 96" PIPE	101.18
EW-7S	ENDWALLS FOR MULTIPLE PIPE CULVERTS 42" - 96" PIPE 30 DEGREE SKEW	101.19
	ENDWALLS FOR MULTIPLE PIPE CULVERTS 42" - 96" PIPE 45 DEGREE SKEW	101.20
EW-7S PC	PRECAST ENDWALLS FOR MULTIPLE PIPE CULVERTS 42" - 96" PIPE 45 DEGREE SKEW	101.21
EW-9	ENDWALLS FOR PIPE ARCHES 13" - 38" RISE	101.22
EW-9PC	PRECAST ENDWALLS FOR PIPE ARCHES 13" - 38" RISE	101.23
EW-10	ENDWALLS FOR MULTIPLE PIPE ARCHES 13" - 38" RISE	101.24
EW-10PC	PRECAST ENDWALLS FOR MULTIPLE PIPE ARCHES 13" - 38" RISE	101.25
EW-11	PIPE ENDWALL WITH LOAD-CARRYING GRATE FOR 12" - 60" PIPES	101.26
	PIPE ENDWALL WITH LOAD-CARRYING GRATE FOR 12" - 60" PIPES	101.27
	PIPE ENDWALL WITH LOAD-CARRYING GRATE FOR 12" - 60" PIPES	101.28
EW-11A	PIPE ENDWALL WITH LOAD-CARRYING GRATE FOR 12" - 24" PIPES	101.29
	PIPE ENDWALL WITH LOAD-CARRYING GRATE FOR 12" - 24" PIPES	101.30
EW-11APC	PRECAST PIPE ENDWALL WITH LOAD-CARRYING GRATE FOR 12" - 24" PIPES	101.31
EW-12	ENDWALL FOR PIPE UNDERDRAN	101.32

INDEX OF SHEETS
SECTION 100-DRAINAGE
 VIRGINIA DEPARTMENT OF TRANSPORTATION

	ROAD AND BRIDGE STANDARDS
	REVISION DATE SHEET 1 OF 6
100.01	

STANDARD	TITLE	PAGE
ES-1	FLARED END-SECTION FOR 12" TO 60" CONCRETE PIPE CULVERTS	102.01
ES-1A	FLARED END-SECTION FOR 23" X 14" TO 53" X 34" ELLIPTICAL CONCRETE PIPE CULVERTS	102.01
ES-2	FLARED END-SECTION FOR 12" - 60" CORRUGATED PIPE CULVERTS	102.02
ES-3	FLARED END-SECTION FOR METAL PIPE ARCHES 13" - 47" RISE PRECAST UNIT ASSEMBLY DIAGRAM	102.03
	LEGEND AND GENERAL NOTES - PRECAST	102.04
T-DI-1	STANDARD PRECAST TOP UNITS	103.01
T-DI-2	STANDARD PRECAST TOP UNITS	103.02
T-DI-3, 4	STANDARD PRECAST TOP UNITS	103.03
	STANDARD PRECAST TOP UNITS	103.04
T-DI-5	STANDARD PRECAST TOP UNITS	103.05
T-DI-7	STANDARD PRECAST TOP UNITS	103.06
T-MH-2	STANDARD PRECAST MANHOLE TOP UNITS	103.07
R-1, 2, 3	STANDARD PRECAST REDUCER AND RISER UNITS	103.08
B-1, 2	STANDARD PRECAST BASE UNITS	103.09
B-3	STANDARD PRECAST BASE UNITS	103.10
B-4	CORRUGATED METAL TEE SECTION MAX. DEPTH (H) 25'	103.11
DI-1	STANDARD DROP INLET 12" - 24" PIPE: MAXIMUM DEPTH (H) -10'	103.12
DI-1A	STANDARD DROP INLET 12" - 24" PIPE: MAXIMUM DEPTH (H) 10' TO 20'	103.13
DI-2A, 2B, 2C	STANDARD CURB DROP INLET 12" - 24" PIPE: MAXIMUM DEPTH (H) -9'	104.01
	DIMENSIONS, NOTES, AND QUANTITIES	104.02
DI-2A, 2BB, 2CC	STANDARD CURB DROP INLET 12" - 24" PIPE: DEPTH (H) 9' TO 20'	104.03
DI-2D, 2E, 2F	STANDARD CURB DROP INLET 30" - 48" PIPE: MAXIMUM DEPTH (H) -9'	104.04
	DIMENSIONS, NOTES, AND QUANTITIES	104.05
DI-2DD, 2EE, 2FF	STANDARD CURB DROP INLET 30" - 48" PIPE: DEPTH (H) -9' TO 20'	104.06
DI-3A, 3B, 3C	STANDARD CURB DROP INLET 12" - 30" PIPE: MAXIMUM DEPTH (H) -8'	104.07
	DIMENSIONS, NOTES, AND QUANTITIES	104.08
DI-3AA, 3BB, 3CC	STANDARD DROP INLET 12" - 30" PIPE: MAXIMUM DEPTH (H) 8' TO 20'	104.09
DI-3D, 3E, 3F	STANDARD DROP INLET (WITH UTILITY SPACE) 12" - 30" PIPE: MAXIMUM DEPTH (H) -8'	104.10
	DIMENSIONS, NOTES, AND QUANTITIES	104.11
DI-3DD, 3EE, 3FF	STANDARD CURB DROP INLET (WITH UTILITY SPACE) 12" - 30" PIPE: DEPTH (H) -8' TO 20'	104.12
	DIMENSIONS, NOTES, AND QUANTITIES	104.13
	DIMENSIONS, NOTES, AND QUANTITIES	104.14

VDOT

ROAD AND BRIDGE STANDARDS

SHEET 2 OF 8 REVISION DATE

100.02

INDEX OF SHEETS
SECTION 100-DRAINAGE

VIRGINIA DEPARTMENT OF TRANSPORTATION

STANDARD	TITLE	PAGE
D-4A, 4B, 4C	STANDARD CURB DROP INLET 36" - 48" PIPE: MAXIMUM DEPTH (H)-8" DIMENSIONS, NOTES, AND QUANTITIES	104.15
D-4AA, 4BB, 4CC	STANDARD CURB DROP INLET 36" - 48" PIPE: DEPTH (H) 8' TO 20'	104.16
D-4D, 4E, 4F	STANDARD CURB DROP INLET (WITH UTILITY SPACE) 36" - 48" PIPE: MAXIMUM DEPTH (H) 8' DIMENSIONS, NOTES, AND QUANTITIES	104.17
D-4DD, 4EE, 4FF	STANDARD CURB DROP INLET (WITH UTILITY SPACE) 36" - 48" PIPE: DEPTH (H) 8' TO 16'	104.18
D-5	STANDARD DITCH DROP INLET	104.19
D-7, 7A, 7B	STANDARD MEDIAN DROP INLET 12" - 42" PIPE COVER AND GUTTER DETAILS	104.20
D-7, 7A, 7B	STANDARD DI-7, 7A OR 7B WITH FLUME CONNECTION 12" TO 36" PIPE	104.21
D-9	15" PIPE TEE SECTION DROP INLET	104.22
D-10G, 10H, 10I	CONCRETE MEDIAN BARRIER DROP INLET (WITH MB-7D) 12" TO 36" PIPE: DEPTH (H)-20' MAX. DIMENSIONS, NOTES, AND QUANTITIES	104.23
D-10J, 10K, 10L	CONCRETE MEDIAN BARRIER DROP INLET (WITH MB-8A) 12" TO 24" PIPE: DEPTH (H)-20' MAX. DIMENSIONS, NOTES, AND QUANTITIES	104.24
D-12, 12A	MULTIGRATE DROP INLET FOR PIPE SIZES 12" - 72" GRATE DETAILS	104.25
D-12B, 12C	MULTIGRATE DROP INLET FOR PIPE SIZES 12" - 36" DIMENSIONS, NOTES, AND QUANTITIES	104.26
D-13	SHOULDER SLOT INLET SHOULDER SLOT INLET	104.27
D-14A, 14B, 14C	METHOD OF OUTLET PIPE INSTALLATION FOR D-13 CONCRETE MEDIAN BARRIER DROP INLET (TALL WALL WITH MB-12) 12" - 36" PIPE: DEPTH (H)-20'-0" MAX. DIMENSIONS, NOTES, AND QUANTITIES	104.28
D-14D, 14E, 14F	CONCRETE MEDIAN BARRIER DROP INLET (TALL WALL WITH MB-13) 12" - 24" PIPE: DEPTH (H)-20'-0" MAX.	104.29
D-14G	CONCRETE MEDIAN BARRIER DROP INLET (TALL WALL WITH MB-13) 12" - 24" PIPE: DEPTH (H)-20'-0" MAX.	104.30
D-14H	CONSTRUCTION METHOD FOR CONCRETE MASONRY BLOCK CURB DROP INLET	104.31
D-14I	STANDARD INLET FRAME AND COVER	104.32
D-14J	STANDARD INLET FRAME AND COVER	104.33
D-14K	PRECAST INLET FRAME AND COVER	104.34
D-14L	PRECAST INLET FRAME AND COVER	104.35
D-14M	PRECAST INLET FRAME AND COVER	104.36
D-14N	PRECAST INLET FRAME AND COVER	104.37
D-14O	PRECAST INLET FRAME AND COVER	104.38
D-14P	PRECAST INLET FRAME AND COVER	104.39
D-14Q	PRECAST INLET FRAME AND COVER	104.40
D-14R	PRECAST INLET FRAME AND COVER	104.41
D-14S	PRECAST INLET FRAME AND COVER	104.42
D-14T	PRECAST INLET FRAME AND COVER	104.43
D-14U	PRECAST INLET FRAME AND COVER	104.44
D-14V	PRECAST INLET FRAME AND COVER	104.45

INDEX OF SHEETS
SECTION 100-DRAINAGE

VIRGINIA DEPARTMENT OF TRANSPORTATION

VDOT	
ROAD AND BRIDGE STANDARDS	
REVISION DATE	SHEET 3 OF 6
100.03	

STANDARD

TITLE

PAGE

MH-1	MANHOLE FOR 12" TO 48" PIPE CULVERT	106.01
	STANDARD MANHOLE FRAME AND COVER	106.02
	STANDARD MANHOLE FRAME AND COVER	106.03
	STANDARD MANHOLE FRAME AND COVER	106.04
MH-1A	STANDARD MANHOLE FRAME AND COVER	106.05
MH-2	STANDARD MANHOLE FRAME AND COVER	106.06
	PRECAST MANHOLE	106.07
IS-1	METHOD OF SHAPING MANHOLE AND INLET CULVERTS	106.08
ST-1	STANDARD STEP	106.09
JB-1	JUNCTION BOX CHAMBER DETAILS FOR 48" - 72" PIPE CULVERTS	106.10
	JUNCTION BOX DETAILS FOR ANGULAR CONNECTIONS OF 48" - 72" PIPE CULVERTS	106.11
	JUNCTION BOX TOWER DETAILS FOR 48" - 72" PIPE CULVERTS	106.12
	JUNCTION BOX DISPLACEMENT QUANTITIES FOR 48" - 72" PIPE CULVERTS	106.13
SL-1	TYPICAL CONCRETE SAFETY SLAB FOR DROP INLETS, MANHOLES AND JUNCTION BOXES	106.14
DSB-1	DRAINAGE STRUCTURE BEDDING FOR DROP INLETS, MANHOLES, AND JUNCTION BOXES	106.15
PB-1	INSTALLATION OF PIPE CULVERTS AND STORM SEWERS	107.00
	INSTALLATION OF PIPE CULVERTS AND STORM SEWERS CIRCULAR PIPE BEDDING AND BACKFILL - METHOD "A"	107.01
	INSTALLATION OF PIPE CULVERTS AND STORM SEWERS ELLIPTICAL PIPE BEDDING AND BACKFILL - METHOD "A"	107.02
	INSTALLATION OF PIPE CULVERTS AND STORM SEWERS PIPE ARCH BEDDING AND BACKFILL	107.03
PC-1	INSTALLATION OF BOX CULVERTS BEDDING AND BACKFILL	107.04
	CONCRETE PIPE - CLASS TABLE FOR H-20 LIVE LOAD	107.05
	ELLIPTICAL CONCRETE PIPE - TABLE FOR H-20 LIVE LOAD	107.06
	CORRUGATED STEEL PIPE - HEIGHT OF COVER TABLE FOR H-20 LIVE LOAD	107.07
	CORRUGATED ALUMINUM ALLOY PIPE - HEIGHT OF COVER TABLE FOR H-20 LIVE LOAD	107.08
	CORRUGATED ALUMINUM ALLOY PIPE - HEIGHT OF COVER TABLE FOR H-20 LIVE LOAD	107.09
	CORRUGATED STEEL PIPE ARCH - HEIGHT OF COVER TABLE FOR H-20 LIVE LOAD	107.10
	CORRUGATED ALUMINUM ALLOY PIPE ARCH - HEIGHT OF COVER TABLE FOR H-20 LIVE LOAD	107.11
	STRUCTURAL PLATE STEEL PIPE - HEIGHT OF COVER TABLE FOR H-20 LIVE LOAD	107.12
	STRUCTURAL PLATE ALUMINUM ALLOY PIPE - HEIGHT OF COVER TABLE FOR H-20 LIVE LOAD	107.13
	STRUCTURAL PLATE STEEL PIPE ARCH - HEIGHT OF COVER TABLE FOR H-20 LIVE LOAD	107.14
	STRUCTURAL PLATE ALUMINUM ALLOY PIPE ARCH - HEIGHT OF COVER TABLE FOR H-20 LIVE LOAD	107.15
	STRUCTURAL PLATE STEEL PIPE ARCH - HEIGHT OF COVER TABLE FOR H-20 LIVE LOAD	107.16
	STRUCTURAL PLATE ALUMINUM ALLOY PIPE ARCH - HEIGHT OF COVER TABLE FOR H-20 LIVE LOAD	107.17
	ALUMINUM SPIRAL RIB PIPE - HEIGHT OF COVER TABLE FOR H-20 LIVE LOAD	107.18
	STEEL SPIRAL RIB PIPE - HEIGHT OF COVER TABLE FOR H-20 LIVE LOAD	107.19
	CAST IRON PIPE - STRENGTH TABLE FOR H-20 LIVE LOAD	107.20
	VITRIFIED CLAY AND PLASTIC PIPE - MAXIMUM COVER TABLE FOR H-20 LIVE LOAD	107.21 & 107.22
	ALLOWABLE PIPE CRITERIA FOR CULVERTS AND STORM SEWERS	



ROAD AND BRIDGE STANDARDS

SHEET 4 OF 6 REVISION DATE


100.04

INDEX OF SHEETS
SECTION 100-DRAINAGE
VIRGINIA DEPARTMENT OF TRANSPORTATION

STANDARD	TITLE	PAGE
PP-1	DETAILS FOR BACKFILLING ABANDONED CULVERTS	107.23
UD-1	STANDARD GROUNDWATER UNDERDRAIN	108.01
UD-2	PIPE UNDERDRAIN FOR USE WITH RAISED GRASS MEDIAN STRIPS	108.02
UD-3	STANDARD SIDEWALK UNDERDRAIN	108.03
CO-1	STANDARD COMBINATION UNDERDRAINS (AT LOWER END OF CUTS)	108.04
CO-2	STANDARD COMBINATION UNDERDRAINS (AT GRADE SAGS AND BRIDGE APPROACHES)	108.05
UD-4	STANDARD PAVEMENT EDGE DRAIN	108.06
UD-5	PREFABRICATED GEOCOMPOSITE RETROFIT PAVEMENT EDGE DRAIN	108.07
UD-7	STANDARD RETROFIT EDGE DRAIN	108.08
PG-2A	STANDARD PAVED DITCHES	108.09
PG-3	STANDARD RIPRAP AND SLOPE PROTECTION	109.01
PG-4	STANDARD PAVED FLUME FOR 12" - 24" PIPE CULVERTS	109.02
PG-5	STANDARD PAVED DITCHES	109.03
PG-6A, 6B	STANDARD PRECAST PAVED DITCHES	109.04
PG-7	DITCH FLUME CONNECTOR	109.05
SB-1	STANDARD SPRING BOX	109.06
SB-1-PC	PRECAST SPRING BOX	110.01
EG-1, 1A	STANDARD ENERGY DISSIPATOR FOR USE WITH PAVED FLUME	110.02
EG-1, 1A PC	PRECAST ENERGY DISSIPATOR	111.01
PS-2	STANDARD PIPE SPILLOUT FOR 12" - 18" PIPE CULVERTS	111.02
PS-3	STANDARD PIPE SPILLOUT FOR 21" - 30" PIPE CULVERTS	112.01
EC-1	CULVERT OUTLET PROTECTION	112.02
EC-2	PROTECTIVE COVERING INSTALLATION CRITERIA	113.01
EC-3	SOIL STABILIZATION MAT DITCH INSTALLATION TYPE A OR B	113.02
EC-4	SOIL STABILIZATION MAT SLOPE INSTALLATION TYPE C	113.03
EC-5	ROCK CHECK DAMS TYPE I AND II	113.04
EC-6	TEMPORARY SILT BARRIERS	113.05
	TEMPORARY SILT BARRIERS	113.06
	TEMPORARY SILT BARRIERS	113.07
	INLET PROTECTION (TYPE A AND B)	113.08
	INLET PROTECTION (TYPE C)	113.09
	INLET PROTECTION (TYPE C)	113.10

INDEX OF SHEETS
SECTION 100-DRAINAGE

VIRGINIA DEPARTMENT OF TRANSPORTATION

	
ROAD AND BRIDGE STANDARDS	
REVISION DATE	SHEET 5 OF 6
	100.05

TITLE

	PAGE
EC-7	113.11
EC-8	113.12
EC-9	113.13
EC-10	113.14
EC-11	113.15
EC-12	113.16
EC-13	113.17
EC-14	113.18
SWM-1	114.01
SWM-DR	114.02
	114.03
	114.04
	114.05
	114.06
	114.07
	114.08



ROAD AND BRIDGE STANDARDS

SHEET 6 OF 6 REVISION DATE

100.06 04/09

INDEX OF SHEETS
SECTION 100-DRAINAGE
VIRGINIA DEPARTMENT OF TRANSPORTATION

STANDARD	TITLE	PAGE
CG-2	STANDARD 6" CURB	201.01
CG-3	STANDARD 4" CURB	201.02
CG-6	COMBINATION 6" CURB AND GUTTER	201.03
CG-7	COMBINATION 4" CURB AND GUTTER	201.04
MC-3, 3A	ASPHALT CONCRETE CURB AND MEDIAN (FOR TEMPORARY OR PERMANENT INSTALLATION)	201.05
MC-3B, 3C	ASPHALT CONCRETE CURB AND MEDIAN (FOR TEMPORARY OR PERMANENT INSTALLATION)	201.06
MC-4	ASPHALT CURB AND GUTTER (ASPHALT PAVING UNDER GUARDRAIL)	201.07
	ASPHALT CURB AND GUTTER (ASPHALT PAVING UNDER GUARDRAIL)	201.08
MC-1	CONCRETE MEDIAN CURB	202.01
MS-1	STANDARD SOLID CONCRETE RAISED MEDIAN STRIP	202.02
MS-1A	STANDARD SOLID CONCRETE RAISED MEDIAN STRIP	202.03
MS-2	STANDARD RAISED GRASS MEDIAN STRIP	202.04
MS-4	STANDARD RAISED ASPHALT MEDIAN (WITH P. C. CONCRETE CURB)	202.05
CG-9A	STANDARD ENTRANCE GUTTER WITH FLARED OPENING (FOR USE ACROSS SIDEWALK)	203.01
CG-9B	STANDARD ENTRANCE GUTTER (FOR USE WITH UNPAVED SPACE BETWEEN CURB AND GUTTER)	203.02
CG-9D	STANDARD ENTRANCE GUTTER	203.03
CG-11	METHOD OF TREATMENT (CONNECTION FOR STREET INTERSECTIONS)	203.04
CG-12	CG-12 DETECTABLE WARNING SURFACE (GENERAL NOTES)	203.05
	CG-12 DETECTABLE WARNING SURFACE (TYPE A PERPENDICULAR APPLICATION)	203.06
	CG-12 DETECTABLE WARNING SURFACE (TYPE B PARALLEL APPLICATION)	203.07
	CG-12 DETECTABLE WARNING SURFACE (TYPE C PARALLEL & PERPENDICULAR APPLICATION)	203.08
	CG-12 DETECTABLE WARNING SURFACE (TYPE M)	203.08A
CG-13	COMMERCIAL ENTRANCE (HEAVY TRUCK TRAFFIC ANTICIPATED)	203.09

INDEX OF SHEETS
SECTION 200-CURBS AND ENTRANCES
 VIRGINIA DEPARTMENT OF TRANSPORTATION

VDOT	
ROAD AND BRIDGE STANDARDS	
REVISION DATE	SHEET 1 OF 1
04/09	200.01

STANDARD	TITLE	PAGE
PR-2	PLAN AND REINFORCED CONCRETE PAVEMENT SHOWING REINFORCEMENT, LONGITUDINAL AND TRANSVERSE JOINTS	301.01
	PLAN AND REINFORCED CONCRETE PAVEMENT SHOWING REINFORCEMENT, LONGITUDINAL AND TRANSVERSE JOINTS	301.02
	PLAN AND REINFORCED CONCRETE PAVEMENT SHOWING REINFORCEMENT, LONGITUDINAL AND TRANSVERSE JOINTS	301.03
	STANDARD LOAD TRANSFER ASSEMBLY CONTRACTION JOINT	301.04
	STANDARD LOAD TRANSFER ASSEMBLY EXPANSION JOINT	301.05
PR-3	8" CONTINUOUSLY REINFORCED CONCRETE PAVEMENT (WIRE MESH REINFORCEMENT)	301.06
	8" CONTINUOUSLY REINFORCED CONCRETE PAVEMENT (STEEL BAR REINFORCEMENT)	301.07
	8" CONTINUOUSLY REINFORCED CONCRETE PAVEMENT (FOR USE WITH BAR OR WIRE MESH REINFORCEMENT)	301.08
	8" CONTINUOUSLY REINFORCED CONCRETE PAVEMENT (LEAVE OUT JOINT DETAIL)	301.09
PR-4	9" CONTINUOUSLY REINFORCED CONCRETE PAVEMENT (STEEL BAR REINFORCEMENT)	301.10
	9" CONTINUOUSLY REINFORCED CONCRETE PAVEMENT (FOR USE WITH BAR REINFORCEMENT ONLY)	301.11
	9" CONTINUOUSLY REINFORCED CONCRETE PAVEMENT (LEAVE OUT JOINT DETAIL)	301.12
PR-5	9" CONTINUOUSLY REINFORCED CONCRETE PAVEMENT 14 FOOT TRAVEL LANE	301.13
	9" CONTINUOUSLY REINFORCED CONCRETE PAVEMENT 14 FOOT TRAVEL LANE	301.14
	9" CONTINUOUSLY REINFORCED CONCRETE PAVEMENT 14 FOOT TRAVEL LANE	301.15
PR-6	10" CONTINUOUSLY REINFORCED CONCRETE PAVEMENT 14 FOOT TRAVEL LANE	301.16
	10" CONTINUOUSLY REINFORCED CONCRETE PAVEMENT 14 FOOT TRAVEL LANE	301.17
	10" CONTINUOUSLY REINFORCED CONCRETE PAVEMENT 14 FOOT TRAVEL LANE	301.18
PR-7	11" CONTINUOUSLY REINFORCED CONCRETE PAVEMENT 14 FOOT TRAVEL LANE	301.19
	11" CONTINUOUSLY REINFORCED CONCRETE PAVEMENT 14 FOOT TRAVEL LANE	301.20
	11" CONTINUOUSLY REINFORCED CONCRETE PAVEMENT 14 FOOT TRAVEL LANE	301.21
PR-8	12" CONTINUOUSLY REINFORCED CONCRETE PAVEMENT 14 FOOT TRAVEL LANE	301.22
	12" CONTINUOUSLY REINFORCED CONCRETE PAVEMENT 14 FOOT TRAVEL LANE	301.23
	12" CONTINUOUSLY REINFORCED CONCRETE PAVEMENT 14 FOOT TRAVEL LANE	301.24
PR-9	13" CONTINUOUSLY REINFORCED CONCRETE PAVEMENT 14 FOOT TRAVEL LANE	301.25
	13" CONTINUOUSLY REINFORCED CONCRETE PAVEMENT 14 FOOT TRAVEL LANE	301.26
	13" CONTINUOUSLY REINFORCED CONCRETE PAVEMENT 14 FOOT TRAVEL LANE	301.27
XJ-1	BRIDGE APPROACH EXPANSION JOINT (FOR WIDENING OR MAINTENANCE OR EXISTING XJ-1 ONLY)	302.01
	BRIDGE APPROACH EXPANSION JOINT (INSTALLATION CRITERIA)	302.02
WP-1	METHOD OF WIDENING BRIDGE APPROACH PAVEMENT	303.01
WP-2	PAVEMENT WIDENING	303.02
RS-1	CONTINUOUS SHOULDER RUMBLE STRIPS	304.01
RS-3	CENTERLINE RUMBLE STRIPS	304.02
RS-4	CONTINUOUS SHOULDER RUMBLE STRIPS	304.03
RS-5	INTERMITTENT SHOULDER RUMBLE STRIPS	304.04
TPT-1	TRANSVERSE PAVEMENT TE-IN	305.01

INDEX OF SHEETS
SECTION 300-PAVEMENT ITEMS
 VIRGINIA DEPARTMENT OF TRANSPORTATION

VDOT	
ROAD AND BRIDGE STANDARDS	
REVISION DATE 10/09	SHEET 1 OF 1
300.01	

STANDARD	TITLE	PAGE
RW-2	CONCRETE GRAVITY RETAINING WALLS - LEVEL BACKFILL	401.01
RW-3	CONCRETE GRAVITY RETAINING WALLS INFINITE SURCHARGE AND DECK SURCHARGE - LOADED	401.02
RW-2, 3	SUGGESTED RUSTICATION TREATMENTS FOR RETAINING WALLS	401.03
CW-1	STANDARD REINFORCED CONCRETE CRIB WALL	402.01
	STANDARD REINFORCED CONCRETE CRIB WALL	402.02

INDEX OF SHEETS
SECTION 400-RETAINING WALLS
 VIRGINIA DEPARTMENT OF TRANSPORTATION

VDOT	
ROAD AND BRIDGE STANDARDS	
REVISION DATE	SHEET 1 OF 1
400.01	

STANDARD	TITLE	PAGE
GR-HDW	STANDARD W-BEAM GUARDRAIL HARDWARE	501.01
	STANDARD W-BEAM GUARDRAIL HARDWARE	501.02
	STANDARD THREE BEAM GUARDRAIL HARDWARE	501.03
GR-2, 2A	STANDARD BLOCKED-OUT W-BEAM GUARDRAIL (STRONG POST SYSTEM)	501.04
	STANDARD BLOCKED-OUT W-BEAM GUARDRAIL (STRONG POST SYSTEM) POST AND BLOCKOUT DETAILS	501.05
GR-3	CABLE GUARDRAILS	501.06
	CABLE GUARDRAILS	501.07
	CABLE GUARDRAILS	501.08
GR-6	TERMINAL TREATMENT FOR W-BEAM GUARDRAIL	501.09
	TERMINAL TREATMENT FOR W-BEAM GUARDRAIL	501.10
GR-7	BREAKWAY CABLE TERMINAL - 4' FLARE	501.11
	BREAKWAY CABLE TERMINAL - 4' FLARE	501.12
	BREAKWAY CABLE TERMINAL - 4' FLARE (SITE PREPARATION)	501.13
GR-8, 8A, 8B, 8C	STANDARD W-BEAM GUARDRAIL (WEAK POST SYSTEM)	501.14
	STANDARD W-BEAM GUARDRAIL (WEAK POST SYSTEM)	501.15
GR-9	ALTERNATE BREAKAWAY CABLE TERMINAL - NO FLARE	501.16
	ALTERNATE BREAKAWAY CABLE TERMINAL - NO FLARE (SITE PREPARATION)	501.17
GR-10	GUARDRAIL AT LOW-FILL CULVERT	501.18
	GUARDRAIL AT LOW-FILL CULVERT	501.19
GR-11	TRAILING END TERMINAL TREATMENT	501.20
BGR-01	STANDARD BOX CULVERT GUARDRAIL (TEXAS T6)	501.22
	STANDARD BOX CULVERT GUARDRAIL (TEXAS T6)	501.23
	STANDARD BOX CULVERT GUARDRAIL (TEXAS T6)	501.24
GR-FOA-1	W BEAM GUARDRAIL-FIXED OBJECT ATTACHMENT FOR USE WITH VERTICAL FIXED OBJECTS AND GUARDRAIL (WOOD POSTS)	501.25
	W BEAM GUARDRAIL-FIXED OBJECT ATTACHMENT FOR USE WITH VERTICAL FIXED OBJECTS AND GUARDRAIL (STEEL POSTS)	501.26
	W BEAM GUARDRAIL-FIXED OBJECT ATTACHMENT RUBRAIL AND HARDWARE DETAILS	501.27
GR-FOA-2	W BEAM GUARDRAIL-FIXED OBJECT ATTACHMENT FOR USE BETWEEN SAFETY SHAPE AND AND GUARDRAIL (WOOD POSTS)	501.28
	W BEAM GUARDRAIL-FIXED OBJECT ATTACHMENT FOR USE BETWEEN SAFETY SHAPE AND AND GUARDRAIL (STEEL POSTS)	501.29
	W BEAM GUARDRAIL-FIXED OBJECT ATTACHMENT RUBRAIL AND HARDWARE DETAILS	501.30
GR-FOA-2 & 4	BLOCKED-OUT W-BEAM MEDIAN BARRIER - FIXED OBJECT ATTACHMENT FOR USE BETWEEN MB-7 AND MB-3	501.31
	BLOCKED-OUT W-BEAM MEDIAN BARRIER - FIXED OBJECT ATTACHMENT RUBRAIL AND HARDWARE DETAILS	501.32
GR-FOA-4	W-BEAM GUARDRAIL INSTALLATION CRITERIA	501.33
	W-BEAM GUARDRAIL INSTALLATION CRITERIA	501.34
	W-BEAM GUARDRAIL INSTALLATION CRITERIA	501.35
FOA-CZ	W-BEAM GUARDRAIL INSTALLATION CRITERIA	501.36
	W-BEAM GUARDRAIL INSTALLATION CRITERIA	501.37

INDEX OF SHEETS
SECTION 500-GUARDRAIL, BARRIER AND FENCE

VIRGINIA DEPARTMENT OF TRANSPORTATION

VDOT	
ROAD AND BRIDGE STANDARDS	
REVISION DATE	SHEET 1 OF 2
	500.01

STANDARD	TITLE	PAGE
----------	-------	------

GR-INS:

W BEAM GUARDRAIL INSTALLATION CRITERIA
W BEAM GUARDRAIL INSTALLATION CRITERIA
W BEAM GUARDRAIL INSTALLATION CRITERIA
W BEAM GUARDRAIL AND MEDIAN BARRIER INSTALLATION CRITERIA

501.38
501.39
501.40
501.41

MB-5

BLOCKED-OUT W BEAM MEDIAN BARRIER
STANDARD W BEAM MEDIAN BARRIER (WEAK POST SYSTEM)
STANDARD W BEAM MEDIAN BARRIER (WEAK POST SYSTEM)
CONCRETE MEDIAN BARRIER

502.01
502.02
502.03
502.04

MB-7D, 7E, 7F

PRECAST TRAFFIC BARRIER CONCRETE SERVICE
PRECAST TRAFFIC BARRIER CONCRETE SERVICE
CONCRETE MEDIAN BARRIER TYPE I, II OR III

502.05
502.06
502.07
502.08

MB-9A

CAST IN PLACE CONCRETE MEDIAN BARRIER 12 FOOT TERMINAL SECTION.
PRECAST CONCRETE MEDIAN BARRIER 12 FOOT TERMINAL SECTION
TRAFFIC BARRIER SERVICE CONCRETE PARAPET (SINGLE FACE) (FOR TEMPORARY INSTALLATION ON BRIDGE DECK EXTERIOR)

502.09
502.10
502.11
502.12

MB-10A

TRAFFIC BARRIER SERVICE CONCRETE PARAPET (SINGLE FACE) (FOR TEMPORARY INSTALLATION ON BRIDGE DECK EXTERIOR)
TRAFFIC BARRIER SERVICE CONCRETE PARAPET (DOUBLE FACE) (FOR TEMPORARY INSTALLATION ON BRIDGE DECK EXTERIOR)
TRAFFIC BARRIER SERVICE CONCRETE PARAPET (DOUBLE FACE) (FOR TEMPORARY INSTALLATION ON BRIDGE DECK EXTERIOR)
TRAFFIC BARRIER SERVICE CONCRETE PARAPET (DOUBLE FACE) (FOR TEMPORARY INSTALLATION ON BRIDGE DECK EXTERIOR)

502.13
502.14
502.15
502.16

MB-12A, B, C

CONCRETE MEDIAN BARRIER (TALL WALL)
CONCRETE MEDIAN BARRIER TYPE I, II OR III
CONCRETE MEDIAN BARRIER TYPE I, II OR III

502.17
502.18
502.19

MB-INS

PRECAST CONCRETE MEDIAN BARRIER POSITIVE CONNECTION OPTIONS
PRECAST CONCRETE MEDIAN BARRIER POSITIVE CONNECTION OPTIONS
PRECAST CONCRETE MEDIAN BARRIER POSITIVE CONNECTION OPTIONS
BUTTING TRAFFIC BARRIER SERVICE TO SINGLE FACE PARAPET SERVICE
BUTTING TRAFFIC BARRIER SERVICE TO SINGLE FACE PARAPET SERVICE
STANDARD FENCE GENERAL NOTES
STANDARD FENCE WOVEN WIRE FABRIC
STANDARD FENCE BARBED WIRE
STANDARD FENCE CHAIN LINK
STANDARD FENCE GATES
WATER GATES IN FENCE LINES

502.20
502.21
502.22
502.23
502.24
503.01
503.02
503.03
503.04
503.05
503.06

FE-W1, W2

STANDARD METHOD OF FENCE AND HANDRAIL GROUNDING
STANDARD PLAN AND METHOD OF SETTING RIGHT-OF-WAY MONUMENTS
STANDARD PLAN AND METHOD OF SETTING RIGHT-OF-WAY MONUMENTS

503.07
504.01
504.02

FE-6

RM-1

RM-2



ROAD AND BRIDGE STANDARDS

SHEET 2 OF 2

REVISION DATE

INDEX OF SHEETS
SECTION 500-GUARDRAIL, BARRIER AND FENCE

STANDARD

TITLE

PAGE

S-1

STANDARD CONCRETE STEPS FOR 1 1/2:1 SLOPES
STANDARD CONCRETE STEPS FOR 1 1/2:1 SLOPES

601.01

601.02

601.03

601.04

601.05

601.06

601.07

602.01

602.02

602.03

603.01

604.01

604.02

605.01

606.01

607.01

608.01

608.02

608.03

608.04

608.05

608.06

608.07

608.08

608.09

S-2

STANDARD CONCRETE STEPS FOR 2:1 SLOPES
STANDARD CONCRETE STEPS FOR 2:1 SLOPES

HR-1

STANDARD HANDRAILS (METHOD OF LOCATING AND ERECTING)
MINIMUM DESIGN FOR SMALL BOAT LAUNCHING RAMPS AT PUBLIC LANDINGS

LR-1

SETTLEMENT PLATE

SI-1, 2, 3

STANDARD PLAN FOR SIGN ISLANDS
STANDARD PRIVATE ENTRANCES

PE-1

STANDARD MAINTENANCE CROSSOVER FOR USE ON FREEWAYS
TURN OUT DETAIL

CR-1

PRECAST CONCRETE CATTLE GUARD

RFD-1

PRECAST CONCRETE CATTLE GUARD
STORAGE FACILITY FOR NUCLEAR GAUGE

G-3

METHODS OF UNDERCUTTING ROCK
STANDARD METHOD OF SETTING AND MARKING SLOPE STAKES

NG-1

SIGHT DISTANCES ON HORIZONTAL CURVES HEIGHT OF EYE 3.5 FEET; HEIGHT OF OBJECT 2.0 AND 3.5 FEET
SIGHT DISTANCE ON HORIZONTAL CURVES HEIGHT OF EYE 3.5 FEET; HEIGHT OF OBJECT 0.5

SD-1

SIGHT DISTANCES ON HORIZONTAL CURVES HEIGHT OF EYE 3.5 FEET; HEIGHT OF OBJECT 0.5
SIGHT DISTANCES ON HORIZONTAL CURVES HEIGHT OF EYE 3.5 FEET; HEIGHT OF OBJECT 4.25 FEET

SD-2

SIGHT DISTANCES ON HORIZONTAL CURVES HEIGHT OF EYE 3.5 FEET; HEIGHT OF OBJECT 4.25 FEET
SIGHT DISTANCES ON HORIZONTAL CURVES HEIGHT OF EYE 3.5 FEET; HEIGHT OF OBJECT 4.25 FEET

SD-3

SIGHT DISTANCES ON HORIZONTAL CURVES HEIGHT OF EYE 3.5 FEET; HEIGHT OF OBJECT 4.25 FEET
SIGHT DISTANCES ON HORIZONTAL CURVES HEIGHT OF EYE 3.5 FEET; HEIGHT OF OBJECT 2.00 FEET

SD-4

SIGHT DISTANCES ON HORIZONTAL CURVES HEIGHT OF EYE 3.5 FEET; HEIGHT OF OBJECT 2.00 FEET
SIGHT DISTANCES ON HORIZONTAL CURVES HEIGHT OF EYE 3.5 FEET; HEIGHT OF OBJECT 3.50 FEET

SD-5

SIGHT DISTANCES ON HORIZONTAL CURVES HEIGHT OF EYE 3.5 FEET; HEIGHT OF OBJECT 3.50 FEET
SIGHT DISTANCES ON HORIZONTAL CURVES HEIGHT OF EYE 3.5 FEET; HEIGHT OF OBJECT 3.50 FEET

INDEX OF SHEETS
SECTION 600-MISC AND TABLES

VIRGINIA DEPARTMENT OF TRANSPORTATION



ROAD AND BRIDGE STANDARDS

REVISION DATE SHEET 1 OF 1

600.01

STANDARD	TITLE	PAGE
GS-1, 1A	TYPICAL METHODS OF GRADING SIDE SLOPES	701.01
GS-2	SUGGESTED DRAINAGE TREATMENT AT BEGINNING OF FILLS	701.02
GS-2A	TYPICAL METHODS OF GRADING SIDE SLOPES	701.03
GS-3	TYPICAL METHODS OF GRADING SIDE SLOPES	701.04
GS-3A	TYPICAL METHODS OF GRADING SIDE SLOPES	701.05
GS-3B	TYPICAL METHODS OF GRADING SIDE SLOPES	701.06
GS-4	TYPICAL METHODS OF GRADING SIDE SLOPES	701.07
GS-4A	TYPICAL METHODS OF GRADING SIDE SLOPES	701.08
GS-4B	TYPICAL METHODS OF GRADING SIDE SLOPES	701.09
GS-4C	TYPICAL METHODS OF GRADING SIDE SLOPES	701.10
GS-4E	TYPICAL METHODS OF GRADING SIDE SLOPES	701.11
GS-10	MINIMUM DESIGN CRITERIA FOR TEMPORARY DETOURS (MOT)	702.01
GS-11	STANDARD SHOULDER DESIGN FOR ALL SYSTEMS EXCEPT LOCAL ROADS AND STREETS	702.02
GS-12	STANDARD SHOULDER DESIGN FOR LOCAL ROADS AND STREETS	702.03
GS-13	STANDARD GRADED MEDIAN DESIGNS	702.04

INDEX OF SHEETS
SECTION 700-GEOMETRIC DESIGN
 VIRGINIA DEPARTMENT OF TRANSPORTATION

VDOT	
ROAD AND BRIDGE STANDARDS	
REVISION DATE	SHEET 1 OF 1
700.01	

COMMONWEALTH OF VIRGINIA




2008

ROAD AND BRIDGE STANDARDS

VOLUME II

STANDARD	TITLE	PAGE
TC-6.01, 5.04	EXPLANATION OF TABLES AND INSTRUCTIONS FOR USE (GENERAL CONDITIONS)	802.01
TC-6.01, 5.04	TRANSITION CURVES FOR RURAL AND URBAN HIGHWAYS AND STREET CONDITIONS	802.02
TC-6.01	EXPLANATION OF TABLES AND INSTRUCTIONS FOR USE (RURAL CONDITIONS)	802.03
TC-6.01, 5.04	EXPLANATION OF TABLES AND INSTRUCTIONS FOR USE (URBAN CONDITIONS)	802.04
TC-6.01, 5.04	DETAIL FOR TRANSITIONED & RURAL CONDITION WITH PAVEMENT WIDENING	802.05
	DETAIL FOR NON-TRANSITION & URBAN AND RURAL CONDITIONS W/OUT PAVEMENT WIDENING	802.06
	DETAIL OF SUPERELEVATION ABOUT BASELINE	802.07
	DETAIL OF SUPERELEVATION ABOUT BASELINE	802.08
	EXAMPLE FOR FOUR LANE ROADWAYS	802.09
	CROSS SECTION - FOUR LANE ROADWAY	802.10
	METHOD OF APPLYING TC-5.01 ON COMPOUND CURVES RURAL CONDITIONS WITH PAVEMENT WIDENING	802.11
	METHOD OF APPLYING TC-5.01 ON REVERSE CURVES RURAL CONDITION WITH PAVEMENT WIDENING	802.12
	METHOD OF APPLYING TC-5.01 ON COMPOUND CURVES URBAN AND RURAL CONDITIONS WITHOUT PAVEMENT WIDENING	802.13
	METHOD OF APPLYING TC-5.01 ON REVERSE CURVES URBAN AND RURAL CONDITIONS WITHOUT PAVEMENT WIDENING	802.14
	CROWN TRANSITION / TANGENT RUNOUT (L) TABLE	802.15
	SUPERELEVATION RUNOFF (L) TABLE I (URBAN AND RURAL CONDITIONS WITHOUT PAVEMENT WIDENING)	802.16
	SUPERELEVATION RUNOFF (L) TABLE II (RURAL CONDITIONS WITH PAVEMENT WIDENING)	802.17
	DESIGN SUPERELEVATION RATES URBAN CONDITIONS	802.18
	DESIGN SUPERELEVATION RATES RURAL CONDITIONS	802.19
	SHEET INTENTIONALLY LEFT BLANK	802.20
	METHODS FOR CALCULATING TC-5.01 VALUES	802.21
	CALCULATED TC-5.01 EXAMPLES	802.22
	SUMMARY OF STANDARD TC-5.04 U.S. URBAN LOW SPEED DESIGN FACTORS	802.23
	TRANSITION CURVES - URBAN 20 MPH DESIGN SPEED	802.24
	TRANSITION CURVES - URBAN 25 MPH DESIGN SPEED	802.25
	TRANSITION CURVES - URBAN 30 MPH DESIGN SPEED	802.26
	TRANSITION CURVES - URBAN 35 MPH DESIGN SPEED	802.27
	TRANSITION CURVES - URBAN 40 MPH DESIGN SPEED	802.28
	TRANSITION CURVES - URBAN 45 MPH DESIGN SPEED	802.29
	TRANSITION CURVES - URBAN 50 MPH DESIGN SPEED	802.30
	TRANSITION CURVES - URBAN 55 MPH DESIGN SPEED	802.31
	TRANSITION CURVES - RURAL 20 MPH DESIGN SPEED	802.32
	TRANSITION CURVES - RURAL 25 MPH DESIGN SPEED	802.33
	TRANSITION CURVES - RURAL 30 MPH DESIGN SPEED	802.34
	TRANSITION CURVES - RURAL 35 MPH DESIGN SPEED	802.35
	TRANSITION CURVES - RURAL 40 MPH DESIGN SPEED	802.36

INDEX OF SHEETS
SECTION 800-TRANSITION CURVES
 VIRGINIA DEPARTMENT OF TRANSPORTATION

 ROAD AND BRIDGE STANDARDS	REVISION DATE	SHEET 1 OF 2
		800.01

STANDARD

TITLE

PAGE

TC-5.01

- TRANSITION CURVES - RURAL 45 MPH DESIGN SPEED
- TRANSITION CURVES - RURAL 50 MPH DESIGN SPEED
- TRANSITION CURVES - RURAL 55 MPH DESIGN SPEED
- TRANSITION CURVES - RURAL 60 MPH DESIGN SPEED
- TRANSITION CURVES - RURAL 65 MPH DESIGN SPEED
- TRANSITION CURVES - RURAL 70 MPH DESIGN SPEED

- 802.37
- 802.38
- 802.39
- 802.40
- 802.41
- 802.42



ROAD AND BRIDGE STANDARDS

SHEET 2 OF 2

REVISION DATE

800.02

INDEX OF SHEETS
SECTION 800-TRANSITION CURVES
VIRGINIA DEPARTMENT OF TRANSPORTATION

STANDARD	TITLE	PAGE
BCB-DT	OVERSIZE BOX CULVERT STANDARD DETAILS	1001.01
	OVERSIZE BOX CULVERT STANDARD DETAILS	1001.02
BCB-02	OVERSIZE BOX CULVERT (0 TO 2 FT. FILLS)	1001.03
BCB-05	OVERSIZE BOX CULVERT (2 TO 5 FT. FILLS)	1001.04
BCB-10	OVERSIZE BOX CULVERT (5 TO 10 FT. FILLS)	1001.05
BCB-15	OVERSIZE BOX CULVERT (10 TO 15 FT. FILLS)	1001.06
BCB-20	OVERSIZE BOX CULVERT (15 TO 20 FT. FILLS)	1001.07
BCB-25	OVERSIZE BOX CULVERT (20 TO 25 FT. FILLS)	1001.08
BCB-30	OVERSIZE BOX CULVERT (25 TO 30 FT. FILLS)	1001.09
BCB-35	OVERSIZE BOX CULVERT (30 TO 35 FT. FILLS)	1001.10
BCB-40	OVERSIZE BOX CULVERT (35 TO 40 FT. FILLS)	1001.11
BCB-45	OVERSIZE BOX CULVERT (40 TO 45 FT. FILLS)	1001.12
BCB-50	OVERSIZE BOX CULVERT (45 TO 50 FT. FILLS)	1001.13
BCS-DT	SINGLE BOX CULVERT STANDARD DETAILS	1002.01
	SINGLE BOX CULVERT STANDARD DETAILS	1002.02
BCS-02	SINGLE BOX CULVERT (0 TO 2 FT. FILLS)	1002.03
	SINGLE BOX CULVERT (0 TO 2 FT. FILLS)	1002.04
BCS-05	SINGLE BOX CULVERT (2 TO 5 FT. FILLS)	1002.05
	SINGLE BOX CULVERT (2 TO 5 FT. FILLS)	1002.06
BCS-10	SINGLE BOX CULVERT (5 TO 10 FT. FILLS)	1002.07
	SINGLE BOX CULVERT (5 TO 10 FT. FILLS)	1002.08
BCS-15	SINGLE BOX CULVERT (10 TO 15 FT. FILLS)	1002.09
	SINGLE BOX CULVERT (10 TO 15 FT. FILLS)	1002.10
BCS-20	SINGLE BOX CULVERT (15 TO 20 FT. FILLS)	1002.11
	SINGLE BOX CULVERT (15 TO 20 FT. FILLS)	1002.12
BCS-25	SINGLE BOX CULVERT (20 TO 25 FT. FILLS)	1002.13
	SINGLE BOX CULVERT (20 TO 25 FT. FILLS)	1002.14
BCS-30	SINGLE BOX CULVERT (25 TO 30 FT. FILLS)	1002.15
	SINGLE BOX CULVERT (25 TO 30 FT. FILLS)	1002.16
BCS-35	SINGLE BOX CULVERT (30 TO 35 FT. FILLS)	1002.17
	SINGLE BOX CULVERT (30 TO 35 FT. FILLS)	1002.18
BCS-40	SINGLE BOX CULVERT (35 TO 40 FT. FILLS)	1002.19
	SINGLE BOX CULVERT (35 TO 40 FT. FILLS)	1002.20
BCS-45	SINGLE BOX CULVERT (40 TO 45 FT. FILLS)	1002.21
	SINGLE BOX CULVERT (40 TO 45 FT. FILLS)	1002.22

INDEX OF SHEETS
SECTION 1000-BOX CULVERTS

VIRGINIA DEPARTMENT OF TRANSPORTATION



ROAD AND BRIDGE STANDARDS

REVISION DATE

SHEET 1 OF 4

1000.01

STANDARD	TITLE	PAGE
BCS-50	SINGLE BOX CULVERT (45 TO 50 FT. FILLS) SINGLE BOX CULVERT (45 TO 50 FT. FILLS)	1002.23 1002.24
BCD-DT	DOUBLE BOX CULVERT STANDARD DETAILS DOUBLE BOX CULVERT STANDARD DETAILS	1003.01 1003.02
BCD-02	DOUBLE BOX CULVERT (0 TO 2 FT. FILLS) DOUBLE BOX CULVERT (0 TO 2 FT. FILLS)	1003.03 1003.04
BCD-05	DOUBLE BOX CULVERT (2 TO 5 FT. FILLS) DOUBLE BOX CULVERT (2 TO 5 FT. FILLS)	1003.05 1003.06
BCD-10	DOUBLE BOX CULVERT (5 TO 10 FT. FILLS) DOUBLE BOX CULVERT (5 TO 10 FT. FILLS)	1003.07 1003.08
BCD-15	DOUBLE BOX CULVERT (10 TO 15 FT. FILLS) DOUBLE BOX CULVERT (10 TO 15 FT. FILLS)	1003.09 1003.10
BCD-20	DOUBLE BOX CULVERT (15 TO 20 FT. FILLS) DOUBLE BOX CULVERT (15 TO 20 FT. FILLS)	1003.11 1003.12
BCD-25	DOUBLE BOX CULVERT (20 TO 25 FT. FILLS) DOUBLE BOX CULVERT (20 TO 25 FT. FILLS)	1003.13 1003.14
BCD-30	DOUBLE BOX CULVERT (25 TO 30 FT. FILLS) DOUBLE BOX CULVERT (25 TO 30 FT. FILLS)	1003.15 1003.16
BCD-35	DOUBLE BOX CULVERT (30 TO 35 FT. FILLS) DOUBLE BOX CULVERT (30 TO 35 FT. FILLS)	1003.17 1003.18
BCD-40	DOUBLE BOX CULVERT (35 TO 40 FT. FILLS) DOUBLE BOX CULVERT (35 TO 40 FT. FILLS)	1003.19 1003.20
BCD-45	DOUBLE BOX CULVERT (40 TO 45 FT. FILLS) DOUBLE BOX CULVERT (40 TO 45 FT. FILLS)	1003.21 1003.22
BCD-50	DOUBLE BOX CULVERT (45 TO 50 FT. FILLS) DOUBLE BOX CULVERT (45 TO 50 FT. FILLS)	1003.23 1003.24
BCD-DT	TRIPLE BOX CULVERT STANDARD DETAILS TRIPLE BOX CULVERT STANDARD DETAILS	1004.01 1004.02
BCD-02	TRIPLE BOX CULVERT (0 TO 2 FT. FILLS) TRIPLE BOX CULVERT (0 TO 2 FT. FILLS)	1004.03 1004.04
BCD-05	TRIPLE BOX CULVERT (2 TO 5 FT. FILLS) TRIPLE BOX CULVERT (2 TO 5 FT. FILLS)	1004.05 1004.06
BCD-10	TRIPLE BOX CULVERT (5 TO 10 FT. FILLS) TRIPLE BOX CULVERT (5 TO 10 FT. FILLS)	1004.07 1004.08
	TRIPLE BOX CULVERT (5 TO 10 FT. FILLS)	1004.09

ROAD AND BRIDGE STANDARDS
SHEET 2 OF 4
1000.02

REVISION DATE

INDEX OF SHEETS
SECTION 1000-BOX CULVERTS
VIRGINIA DEPARTMENT OF TRANSPORTATION

STANDARD

TITLE

PAGE

BPP-3

BRIDGE CONSTRUCTION AND WIDENING DATE PLATES
BRIDGE CONSTRUCTION AND WIDENING DATE PLATES

1101.01

1101.02

INDEX OF SHEETS
SECTION 1100-MISC. STRUCTURE & BRIDGE

VIRGINIA DEPARTMENT OF TRANSPORTATION



ROAD AND BRIDGE STANDARDS

REVISION DATE

SHEET 1 OF 1

1100.01

STANDARD	TITLE	PAGE
L-3	BENCH PLANTING ON ROCK CUT SECTION	1201.01
L-3A	HORIZONTAL GROOVING CUT SLOPES	1201.02
L-4	METHOD OF PLANTING FOREST TREE SEEDLINGS	1201.03
L-5	PLANTING DETAILS	1201.04
	PLANTING DETAILS	1201.05
	PLANTING DETAILS (ON SLOPES)	1201.06
L-6	FERTILIZER AND MULCH	1201.07
TW-1	STANDARD TREE WALLS AND TREE WELLS	1201.08
PT-1	PRECAST CONCRETE PICNIC TABLE	1201.09
RW-1	DRY RUBBLE RETAINING WALL	1201.10
RW-1A	MORTAR RUBBLE RETAINING WALL (LEVEL BACKFILL)	1201.11
RW-1B	MORTAR RETAINING WALL (INFINITE SURCHARGE AND DECK SURCHARGE - LOADED)	1201.12

INDEX OF SHEETS
SECTION 1200-LANDSCAPE
 VIRGINIA DEPARTMENT OF TRANSPORTATION

VDOT	
ROAD AND BRIDGE STANDARDS	
REVISION DATE	SHEET 1 OF 1
1200.01	

STANDARD	TITLE	PAGE
CF-1	CONTROLLER CABINET FOUNDATION AND CONDUIT	1301.10
CF-2	CONTROLLER CENTER CABINET FOUNDATION AND CABINET	1301.20
CF-3	CONTROLLER CABINET FOUNDATION AND CABINET	1301.30
MP-1	SIGNAL POLE DETAILS	1302.10
MP-2	SIGNAL POLE DETAILS	1302.20
PF-2	PEDESTAL POLE AND FOUNDATION	1302.30
SW-1	SIGNAL HEAD MOUNTING DETAILS	1303.10
SW-2	SIGNAL HEAD MOUNTING DETAILS	1303.20
SW-3	SIGNAL HEAD MOUNTING DETAILS	1303.30
SMB-12.3	SIGNAL HEAD MOUNTING DETAILS	1303.40
TA-1	TETHER WIRE DETAILS	1304.10
SMD-12	SIGN MOUNTING DETAILS	1305.10
WD-1	STEEL SIGNAL POLE WIRING AND RIGGING	1306.10
WD-2	WOOD POLE WIRING AND RIGGING	1306.20
PA-12.3	PEDESTRIAN ACTUATION	1307.10
SPD-5.6.7.8.9	PEDESTRIAN SIGNAL INDICATION	1308.10
FB-2	FLASHING BEACON	1309.10
PF-1	SIGNAL POLE FOUNDATION	1310.10
LF-1	LIGHTING POLE FOUNDATION	1310.20
LP-12	LIGHTING POLE	1311.10
LP-3	HIGH MAST LIGHT POLE	1311.20
SE-1	ELECTRICAL SERVICE	1312.10
SE-2	ELECTRICAL SERVICE	1312.20
SE-3	ELECTRICAL SERVICE	1312.30
SE-4	ELECTRICAL SERVICE	1312.40
SE-5	ELECTRICAL SERVICE	1312.50
SE-6	ELECTRICAL SERVICE	1312.60
SE-7	ELECTRICAL SERVICE	1312.70
SE-8	ELECTRICAL SERVICE	1312.80
SE-9	ELECTRICAL SERVICE	1312.90
SE-10	ELECTRICAL SERVICE	1312.91
SE-11	ELECTRICAL SERVICE	1313.10
CCW-1	CONTROL CENTER WIRING	1313.20
TD-1A,B,C	LOOP DETECTOR	1314.10
TS-1	TYPICAL ONE-WAY BRIDGE SIGNAL	1315.10
		1316.10

INDEX OF SHEETS

SECTION 1300-TRAFFIC CONTROL

VIRGINIA DEPARTMENT OF TRANSPORTATION



ROAD AND BRIDGE STANDARDS

REVISION DATE

SHEET 1 OF 2

1300.01

STANDARD

TITLE

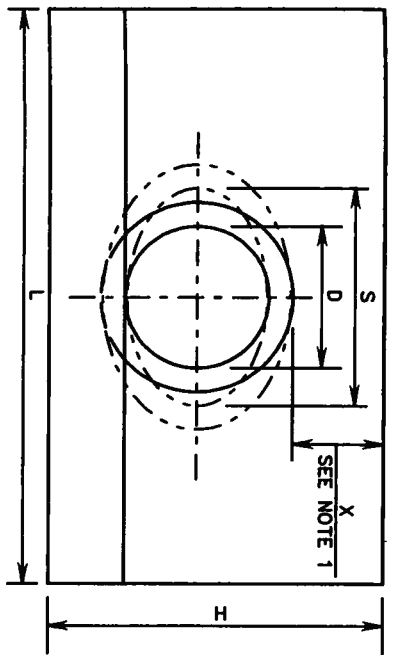
PAGE

UB-1	UTILITY BEDDING AND PROTECTION	1401.01
RB-1	REACTION BLOCKING	1402.01
	REACTION BLOCKING	1402.02
	REACTION BLOCK	1402.03
	VERTICAL OFFSET	1403.01
VE-1	CONCRETE OR STEEL ENCASUREMENT PIPE	1404.01
EP-1	LEAK DETECTOR	1405.01
LD-1	VALVE BOX AND VALVE MANHOLE	1406.01
VB-1	VALVE BOX AND VALVE MANHOLE	1406.02
VM-1	FIRE HYDRANT	1407.01
FR-1	WATER METER AND BOX	1408.01
WM-1	BLOW-OFF VALVE AND BOX	1409.01
BOV-1	AIR RELEASE VALVE AND BOX	1410.01
ARV-1	SANITARY SEWER MANHOLE	1411.01
SMH-1	SANITARY SEWER MANHOLE	1411.02
SMH-1	WATER AND SANITARY SEWER FACILITIES	1412.01
FRG-1	SEWER CLEANOUT	1413.01
SGO-1		

INDEX OF SHEETS
SECTION 1400-UTILITIES

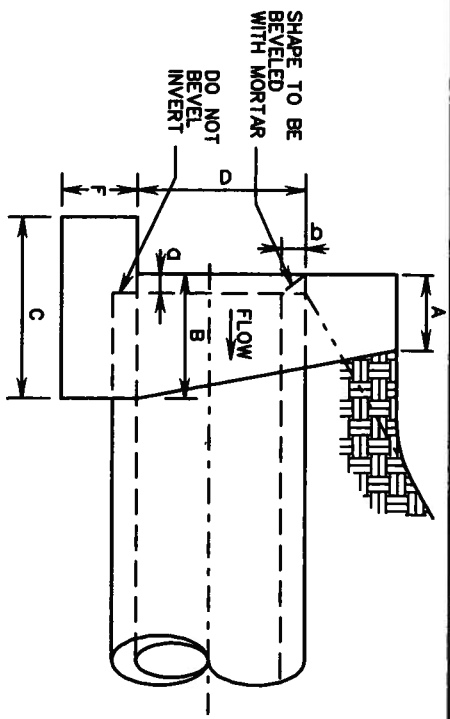
VIRGINIA DEPARTMENT OF TRANSPORTATION

VDOT
ROAD AND BRIDGE STANDARDS
REVISION DATE SHEET 1 OF 1



NOTES: 1. "H" MAY BE REDUCED UNTIL "X" REACHES A MINIMUM OF 4" WHERE ENDWALL WOULD PROTRUDE ABOVE SHOULDER LINE. IN NO CASE SHALL TOP OF ENDWALL PROJECT ABOVE FILL SLOPE, DITCH SLOPE, OR SHOULDER.

- 2. THIS ITEM MAY BE PRECAST OR CAST IN PLACE.
- 3. ALL CAST IN PLACE CONCRETE TO BE CLASS A3, FOR PRECAST SEE SHEET 101.02.
- 4. THIS STANDARD TO BE USED WITH STRAIGHT CROSSINGS AND ALL SKEWS (0° TO 45°).
- 5. HEADWALL TO BE BEVELED IN ALL AREAS EXCEPT WHERE A CONFLICT WITH INVERT OR WINGWALLS OCCUR



- 6. BEVEL EDGE IS REQUIRED ON THE HEADWALL AT THE INLET END OF THE CULVERT (WHERE THE FLOW ENTERS THE CULVERT).
- 7. HEADWALL AT THE OUTLET END OF THE CULVERT MAY BE EITHER SQUARE EDGE OR BEVEL EDGE.
- 8. ON SHALLOW FILLS, WHERE ENDWALLS ARE 1' OR LESS BELOW SHOULDER LINE, THE TOP OF THE ENDWALL SHALL BE CONSTRUCTED PARALLEL TO THE GRADE OF THE ROAD.
- 9. 3/4" CHAMFER MAY BE PROVIDED ON ALL EDGES AT MANUFACTURER'S OPTION.

ENDWALL FOR CIRCULAR PIPE

DIAMETER OF PIPE CULVERT	
12"	15"
18"	21" OR 24"
27"	30"
33"	36"
A	0'-6"
B	0'-11"
C	1'-4"
D	1'-0"
F	0'-6"
H	2'-3"
L	4'-0"
D	0'-1/4"
b	0'-1"

EW-1

ENDWALL FOR ELLIPTICAL PIPE

SIZE OF ELLIPTICAL PIPE CULVERT (SPAN x RISE)	
23"x14"	30"x19"
34"x22"	38"x24"
42"x27"	45"x29"
49"x32"	53"x34"
A	0'-8"
B	1'-2"
C	1'-8"
D	1'-2"
F	0'-8"
H	2'-10"
L	5'-5"
S	1'-11"
D	0'-2/2"
b	0'-2"

EW-1A

105 302

12" - 36" CIRCULAR AND 23" x 14" - 53" x 34" ELLIPTICAL PIPES

STANDARD ENDWALL FOR PIPE CULVERTS

CONC. PIPE 0.241 0.492 0.697 1.319 2.067 2.947

C.M. PIPE 0.257 0.521 0.739 1.398 2.198 3.145

CUBIC YARDS OF CONCRETE

CONC. PIPE 0.502 0.855 1.236 1.500 1.811 2.101 2.512 2.801

CUBIC YARDS OF CONCRETE

VDOT ROAD AND BRIDGE STANDARDS

REVISION DATE SHEET 1 OF 1

101.01